

4675 Missouri Flat Rd.
Placerville, CA 95667
530.622.5081

Steve Wehr
Superintendent

EL DORADO UNION HIGH
SCHOOL DISTRICT
DEMOGRAPHIC STUDY 2015-2016

January 2016



SchoolWorks, GIS
8331 Sierra College Blvd., #221
Roseville, CA 95661

Phone: 916-733-0402
Fax: 916-733-0404
www.SchoolWorksGIS.com

TABLE OF CONTENTS

	Page
INTRODUCTION.....	1
EXECUTIVE SUMMARY	1
METHODOLOGY	2
HISTORIC BIRTH RATES.....	6
NEW HOUSING DEVELOPMENTS	7
HISTORIC ENROLLMENT AND TRENDS	9
SCHOOL PROJECTIONS	10
DISTRICT PROJECTIONS	26
SCHOOL FACILITY UTILIZATION.....	29

CHARTS

	Page
10 YEAR ENROLLMENT HISTORY AND 6 YEAR ENROLLMENT PROJECTIONS	3
2016/2017 1 YEAR ENROLLMENT PROJECTION BY SCHOOL.....	3
KINDERGARTEN PROJECTIONS BASED ON BIRTHS	6
NEW DEVELOPMENT CONSTRUCTION	7
NEW DEVELOPMENT LISTINGS USED IN PROJECTIONS.....	8
STUDENT YIELD RATE	8
HISTORIC ENROLLMENT AND TRENDS	9
LOADING STANDARD ANALYSIS	10
CAPACITY & PROJECTED ENROLLMENT	
EL DORADO HIGH	12
OAK RIDGE HIGH	14
PONDEROSA HIGH.....	16
UNION MINE HIGH	18
INDEPENDENCE HIGH	20
SHENANDOAH VIRTUAL ACADEMY.....	22
COMMUNITY DAY	23
ISP	24
STUDENT RESIDENCY AND ENROLLMENT COMPAISON	25
10 YEAR ENROLLMENT HISTORY & 6 YEAR ENROLLMENT PROJECTION	26
ONE YEAR ENROLLMENT PROJECTION SUMMARY	27
ENROLLMENT PROJECTION SUMMARY BY GRADE	28
ENROLLMENT PROJECTION SUMMARY BY SCHOOL	28
SCHOOL FACILITY UTILIZATION.....	29

MAPS

	Page
DISTRICT MAP WITH STUDENT RESIDENTIAL LOCATION	4
HIGH SCHOOL BOUNDARIES AND COMPREHENSIVE HIGH SCHOOL LOCATIONS.....	5
NEW HOUSING DEVELOPMENTS	7
SCHOOL BOUNDARY MAP	
EL DORADO HIGH	11
OAK RIDGE HIGH	13
PONDEROSA HIGH.....	15
UNION MINE HIGH	17
INDEPENDENCE HIGH	19
SHENANDOAH VIRTUAL ACADEMY	21

Introduction

This Demographic Study provides a comprehensive enrollment analysis for the El Dorado Union High School District. The district-wide and school-specific enrollment projections are meant to serve as a planning tool to help with both long and short term planning. This study examines the factors that influence school enrollments, namely trends in demographics, birth rates, and housing development. The study is also used as a tool to identify certain facility planning requirements such as capacity utilization of existing facilities, planning for modernization or new construction and attendance boundary redistricting. This study provides information based on the 2015/16 District enrollments and policies, City planning policies and residential development. As these factors change and timelines are adjusted, the Demographic Study should be revised to reflect the most current information.

Executive Summary

Located in the Sierra Nevada foothills between Sacramento and South Lake Tahoe, the District encompasses 1,250 square miles, including a large portion of El Dorado County's historic Gold Rush region. The area includes about 40 communities along U.S. Highway 50 corridor that span the county from Kyburz and Pollock Pines in the east to Latrobe and El Dorado Hills in the west.

El Dorado Union High School District includes four comprehensive high schools, three alternative schools, a charter school, a community day school, and a career technical education program (CTE), which includes a regional occupational program (ROP).

This study has been prepared using the 2015/16 student enrollment data, current district policies and the latest new housing development information available at the time of this study. The District has experienced a slow decline for the past 10 years with a peak of 7,344 students during the 2006/07 school year and a current enrollment of 6,678 students.

El Dorado Union High School District is projected to decline in enrollment by 1.77% (or 118 students) for the 2016/17 school year. The District is projected to continue to decline for the next two years before growing slightly over the following four years with a projected enrollment of 6,825 students in the 2021/22 school year. This is a total growth of 147 students, which is an increase of 2.20%.

The projections are predicated upon information provided by local municipalities on the development of 3,735 housing units over the next six years. If the building rates increase or decrease, then the timeline shown in this report will need to be modified accordingly. These projected new developments in the District's boundary are expected to generate 37 students next year, or a total of 504 students in the next six years.

Based on current district loading standards and permanent classroom space the District has a capacity of 5,971 students and a current enrollment of 6,678. The capacity including temporary portables is 8,263. This gives the District a current permanent utilization factor of 111.9% and a temporary utilization factor of 80.8%. The projected permanent utilization factor in six years will be 114.3%. The District is currently housing a large number of students in temporary facilities since there is no available space in their permanent facilities.

These projections assume the transfers between schools remain consistent. If changes in facilities, schedules, programs or policies are made then the patterns may be impacted.

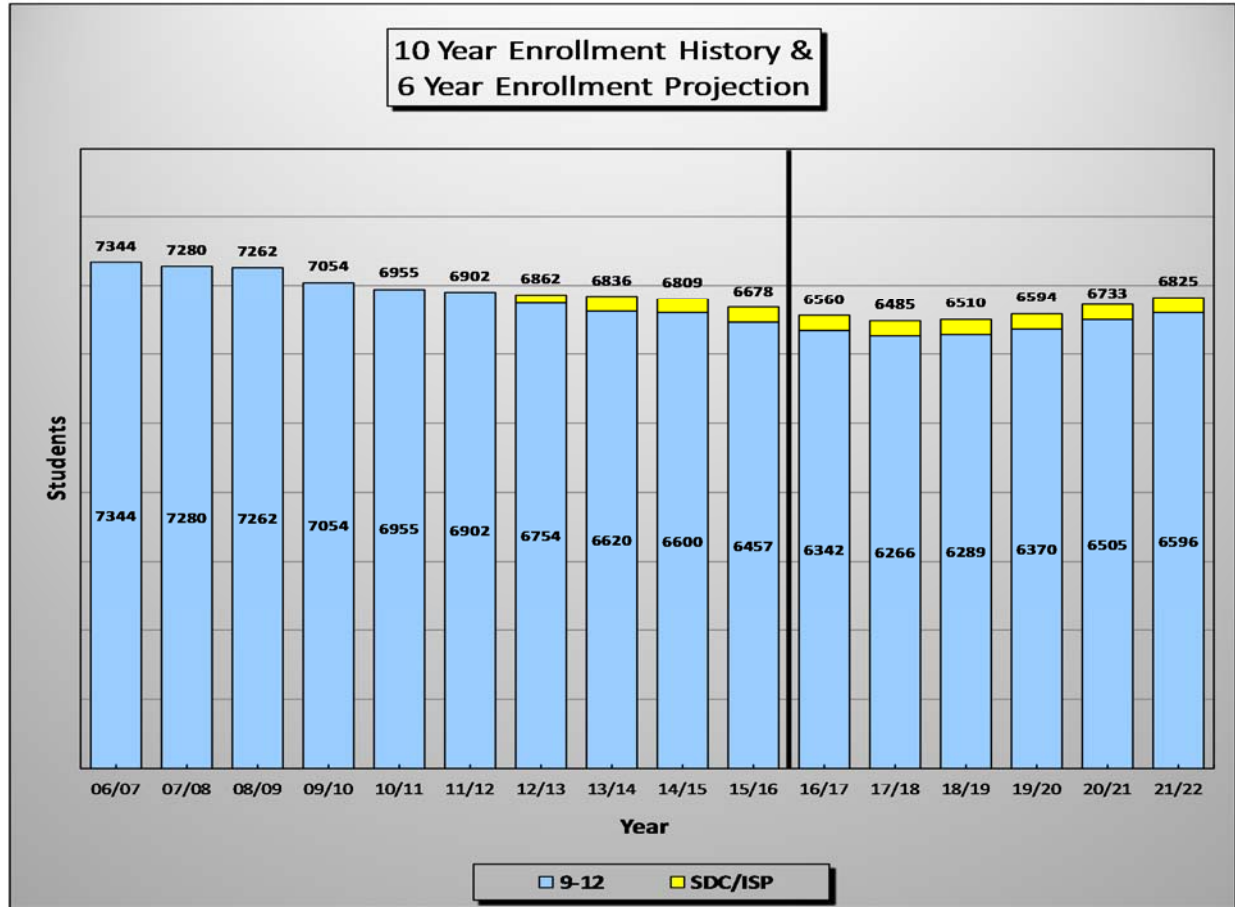
Methodology

The enrollment projections for each school are generated using a State standard weighted cohort trend analysis. The basic projections are created by studying the individual geographic areas. Once the trends are analyzed for each area, the base projections are modified using the following procedures:

- a) Birth rates are used to project future kindergarten enrollment. It is assumed if the births indicate there was an increase of 4% one year, then there will be a corresponding 4% increase in the kindergarten class five years later.
- b) New Housing Development rates and yield factors are compared to the historical impact of development and if the future projections exceed the historical values, the projections are augmented accordingly.
- c) Inter-District student counts are not included in the base geographic trend analysis since these students reside outside of the District. Therefore, the current number of students-per-school and students-per-grade are added to the base projections.
- d) Intra-District students are those who transfer from one school to another. The number of students transferring into and out of each school are calculated and used to determine the difference between the projections for students living in each attendance area versus those that are projected to attend the school.
- e) The projections for special education students and alternative programs are created by assuming those programs typically serve a percentage of the total District population. Therefore as the District grows or declines, the enrollment in those programs would increase or decrease accordingly.

El Dorado Union High School District
Demographic Study
January 2016

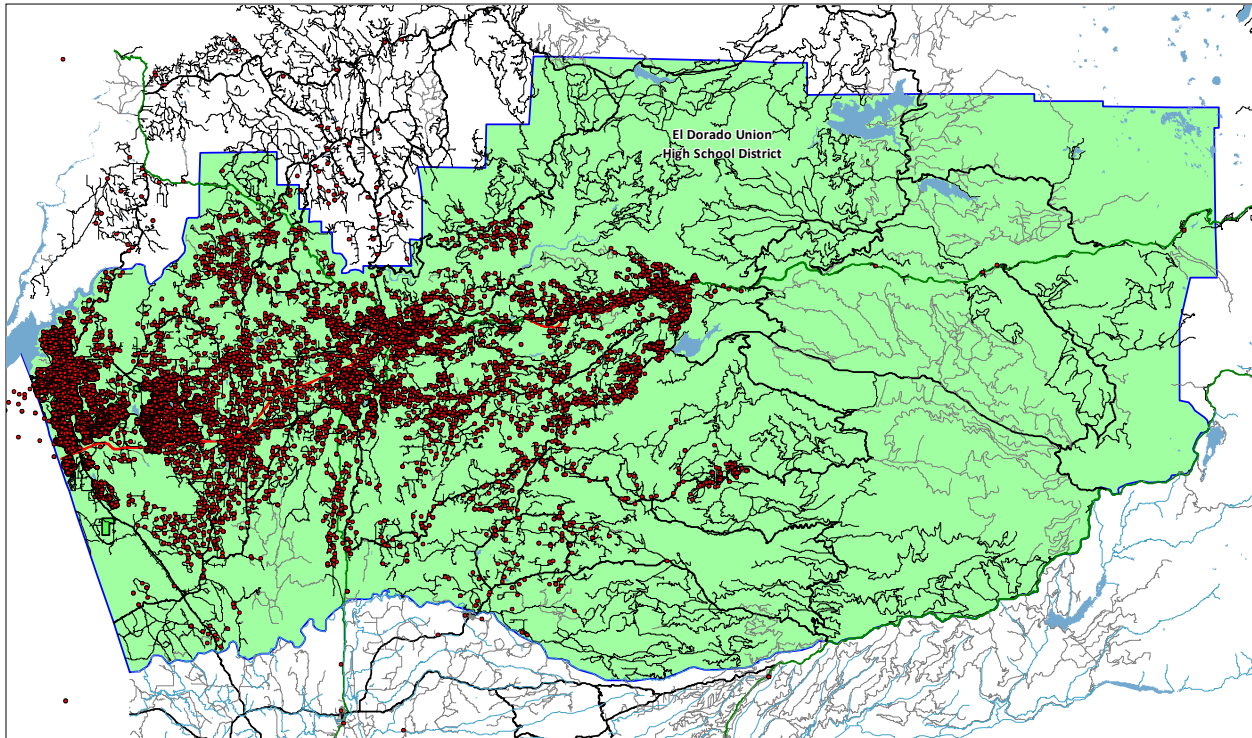
10 Year Enrollment History and 6 Year Enrollment Projections



2016/2017 1 Year Enrollment Projection by School

El Dorado Union High School						
Enrollment Projections						
YEAR 16/17, 1 Year Proj.						
<u>School</u>	<u>9</u>	<u>10</u>	<u>11</u>	<u>12</u>	<u>SDC</u>	<u>TOTAL</u>
El Dorado High	281	289	308	250	20	1,148
Oak Ridge High	636	587	556	603	20	2,402
Ponderosa High	486	400	382	387	55	1,710
Union Mine High	217	276	260	238	16	1,007
Independence High	0	4	29	55	0	88
Shenandoah Virtual Academy	16	18	32	23	0	89
Community Day	0	3	3	3	0	9
ISP	0	0	0	0	107	107
Totals	1,636	1,577	1,570	1,559	218	6,560
Current CBEDS	1,606	1,631	1,636	1,584	221	6,678
Net Change	30	-54	-66	-25	-3	-118
Cohort Change		-29	-61	-77		

District Map with Student Residential Locations



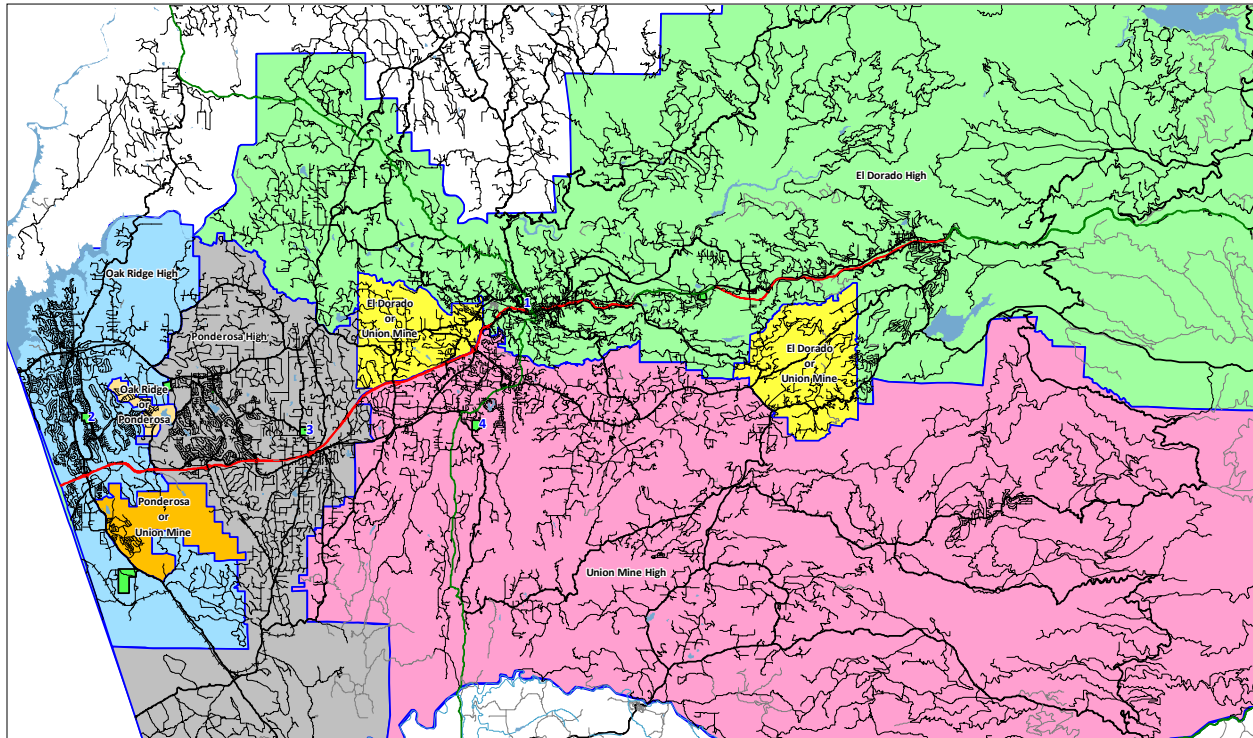
This map shows the District boundary along with the location of each student based on their residential address. This geographic data is the foundation for our demographic analysis. Any red dots outside the district boundary will represent students attending one of the District schools or programs but have a residence outside the District. This map also identifies different areas of student population density.

El Dorado Union High School District

Demographic Study

January 2016

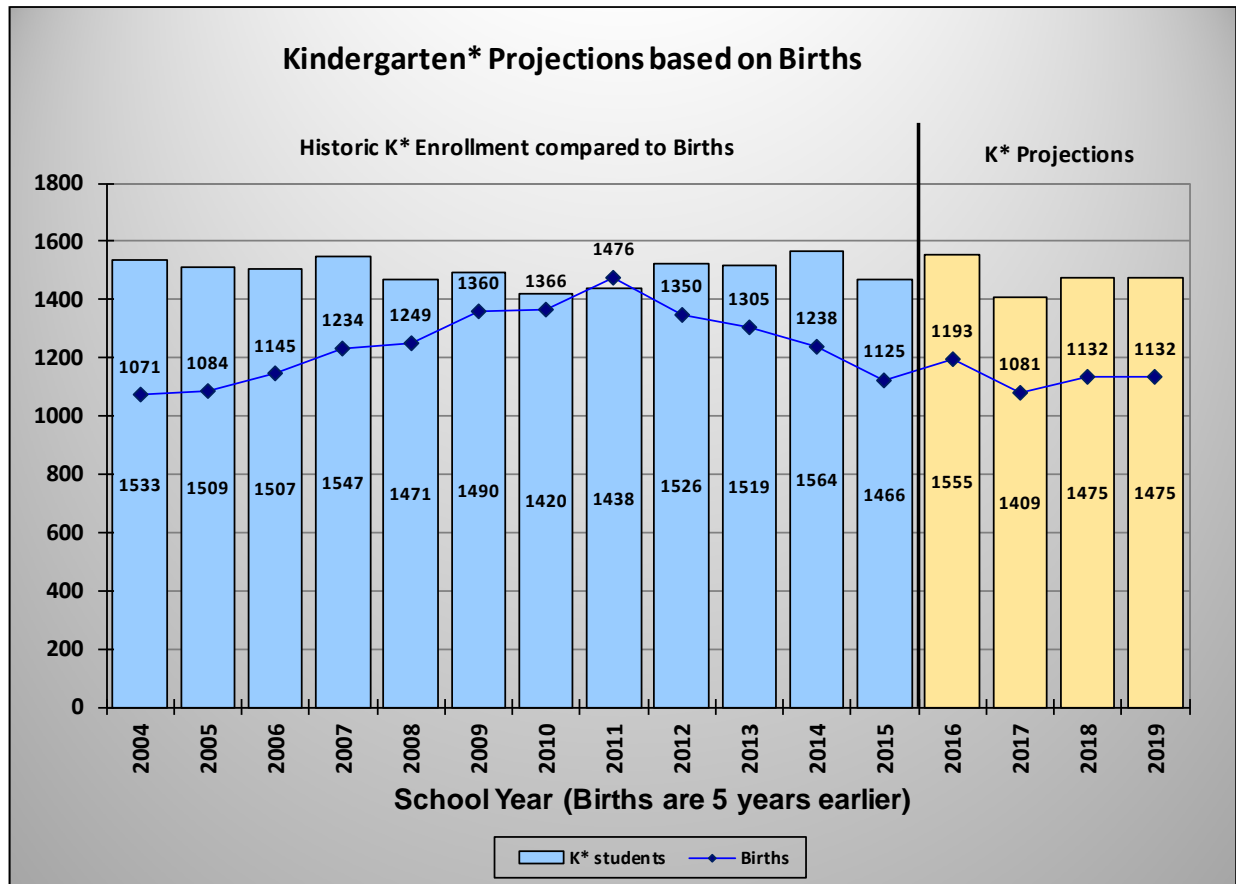
High School Boundaries and Comprehensive High School Locations



<u>Id</u>	<u>School</u>	<u>Grades</u>	<u>Id</u>	<u>School</u>	<u>Grades</u>
1	El Dorado High	9-12	3	Ponderosa High	9-12
2	Oak Ridge High	9-12	4	Union Mine High	9-12

Historic Birth Rates

The following section is an analysis of the number of births in the El Dorado Union High School District. The number of births are compiled by zip code regions and provided by the Department of Health. The zip code areas do not exactly match the District boundaries and therefore the zip codes 95619, 95623, 95636, 95667, 95672, 95682, 95684, 95709, 95726 and 95762 which are in the District were used for this analysis.

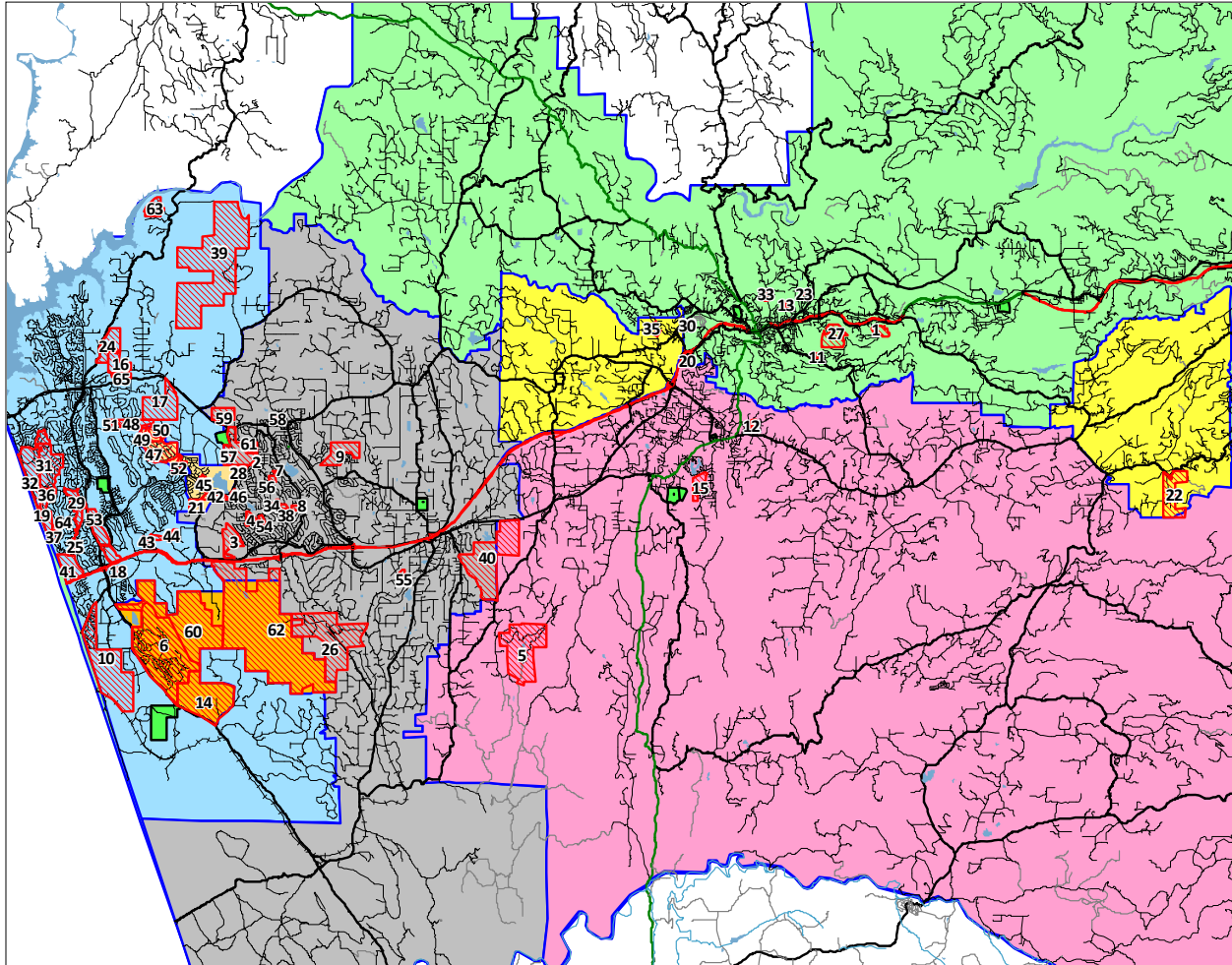


*Kindergarten Totals may include some Transitional Kindergarten students for the current as well as past two years to more accurately correlate a 12-month period of births to a 12-month period of enrollment.

The above figure illustrates the correlation between births in the District area and the number of kindergarten students attending the feeder districts for El Dorado Union High schools five years later. The number of births between 1999 and 2010 has averaged about 1,250 per year. The recent birth rates over the past four years (2011 to 2014) which will generate the kindergarten classes for the next four years (2016 to 2019) have been between 1,081 and 1,193. We have assumed that the current kindergarten capture rate of 130.31% will be maintained in the future. The kindergarten projections shown here do not account for the impact of any additional housing units.

El Dorado Union High School District Demographic Study January 2016

New Housing Developments



This close up view of the District shows the location of the projected new development areas.

El Dorado Union High School District New Development Construction							
Housing Units per Year							
<u>School</u>	<u>16/17</u> <u>Year 1</u>	<u>17/18</u> <u>Year 2</u>	<u>18/19</u> <u>Year 3</u>	<u>19/20</u> <u>Year 4</u>	<u>20/21</u> <u>Year 5</u>	<u>21/22</u> <u>Year 6</u>	<u>Totals</u>
El Dorado High	2	2	2	2	2	2	12
Oak Ridge High	98	155	252	437	434	463	1,839
Ponderosa High	85	85	113	155	322	342	1,102
Union Mine High	90	90	95	95	187	225	782
High Totals	275	332	462	689	945	1,032	3,735

Based on these estimated construction rates, the development will generate 37 students next year and a total of 504 students in the next six years.

Historic Enrollment and Trends

El Dorado Union High School District								
Historic Enrollment and Cohorts								
Grade	CBEDS Enrollment				Historic Cohorts			Weighted Average
	12/13	13/14	14/15	15/16	12 to 13	13 to 14	14 to 15	
9	1,704	1,685	1,641	1,606	-19	-44	-35	-35.3
10	1,699	1,679	1,692	1,631	-25	7	-10	-6.8
11	1,689	1,632	1,671	1,636	-67	-8	-56	-41.8
12	1,662	1,624	1,596	1,584	-65	-36	-87	-66.3
SDC	108	216	209	221	108	-7	12	21.7
Totals	6,862	6,836	6,809	6,678	-13.6	-17.6	-35.2	-25.7
Annual Change:		-26	-27	-131				

This chart shows the enrollment by grade level over the past 4 years. The cohort values were calculated for each grade and each year, along with the weighted average for each grade. A positive cohort value indicates that grade is expected to have more students than the previous grade last year. A negative value would mean that the grade has fewer students compared to the previous grade last year.

In general a positive cohort is representative of growth and a negative cohort indicates a decline in enrollment. There are some exceptions. First grade usually has a positive cohort as there are some students that do not attend kindergarten at public schools but show up in first grade.

Another important item to notice is the current breakdown by grade level of the student population. Comparing the number of students in the lower grades to the upper grades can indicate potential increases or decreases in future enrollments. Also, if there is a large class or a small class, it will slowly cause a ripple in the enrollments as it advances a grade each year.

Finally, the annual change at the bottom of this chart indicates the net impact of the changes in enrollment over the past few years.

School Projections

After the boundary map for each school, there is a chart that shows the projected enrollment for the next six years. These charts indicate the actual enrollment at each school over the past four years along with the projected enrollment for the next six years. In addition, the number of students living in the boundary are shown for the same time period. If there are more students attending than live in the area, then there is a net inflow. If more students live in the boundary than attend the school, then there is a net outflow.

The current capacity is shown on these charts to identify if there will be classroom space available for the students. If space is not available then the attendance patterns will likely need to change if the additional facilities are not provided. The capacity for each school was determined by using the following loading standards for each classroom identified:

<u>Grade</u>	<u>Loading Standard</u>	<u>Grade</u>	<u>Loading Standard</u>
9-12	27.5	SVA	22
CHS	25	CDC	12

These loading standards are based on the current loading factors used this year and may change based on the level of funding for schools in the future.

Loading Standard Analysis

<u>School year(s)</u>	<u>Student/teacher ratio</u>	<u>Class load factor</u>	<u>Class load %</u>	<u>Leeway factor</u>
Pre 2008/09	30 to 1	27 to 1	90%	10%
2008/09-2012/13	32 to 1	27 to 1	84%	16%
2013/14*	31.57	27.5 to 1	87%	13%

*Formula to determine class load factor based on student/teacher ratio:

Student/teacher ratio times Class load percentage equals Class load factor ($31.57 \times 87\% = 27.5$)

Backup data is provided below each projection chart that shows the calculations of the cohort factors used to determine the enrollment projections for each school.

The number of students living in the boundary are shown which are then used to generate the cohort factors. The weighted average of the 3 years was determined with the current year weighted 50%, the prior year 33.3% and the last year 16.7%. This gives the current trends more value in determining the projections. Those cohorts are then used to determine the students who will be residing in each attendance area for the following years. The kindergarten enrollment is projected using the birth data instead of the cohort factor shown here.

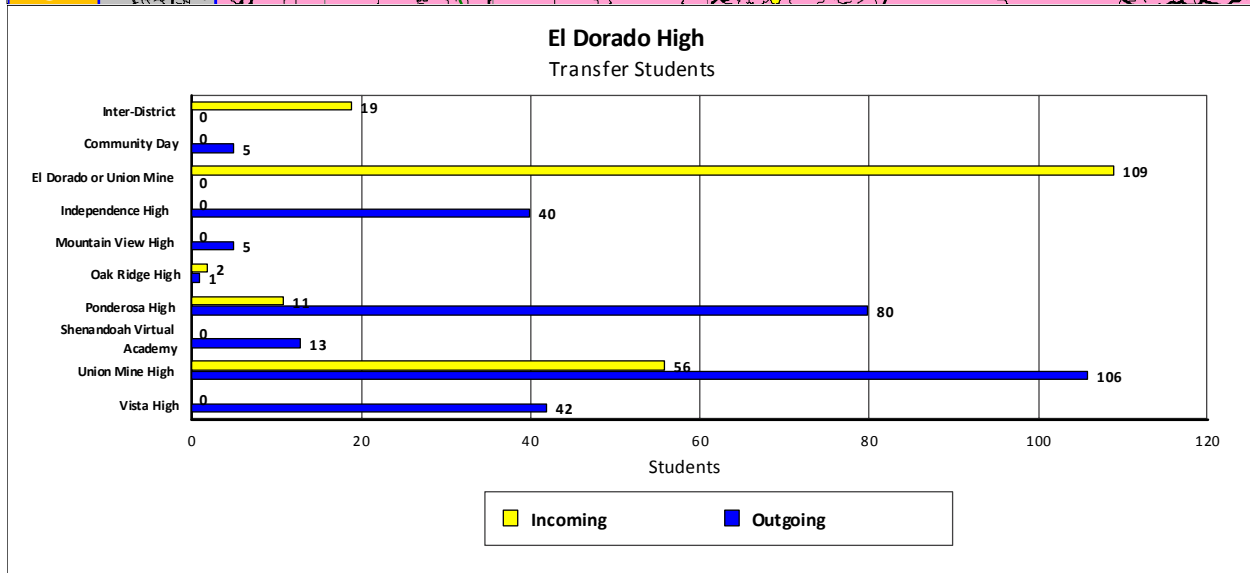
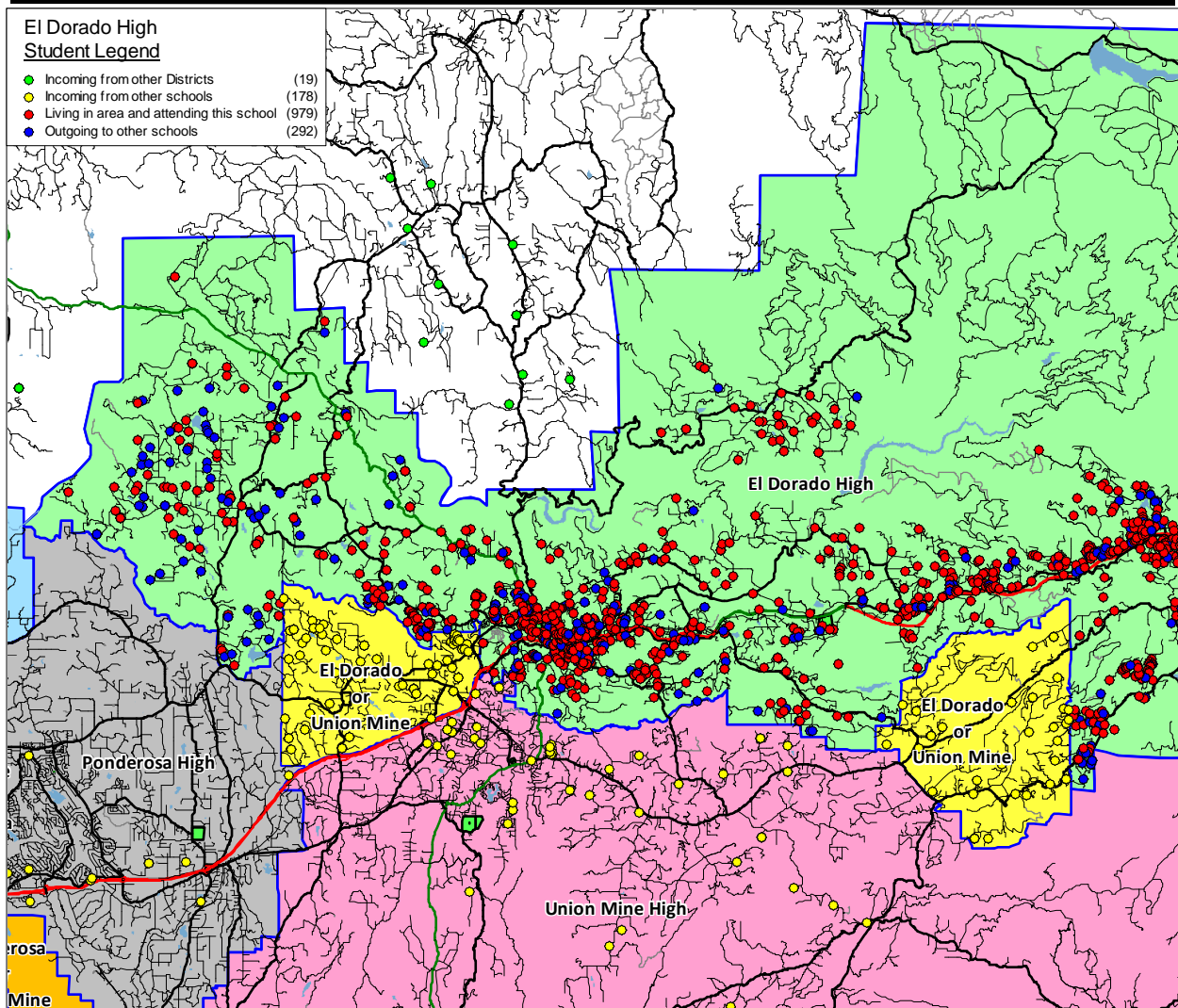
The "Attendance Factors" were determined by analyzing the current year of students to see how many Inter- and Intra-District transfers there are. Once the baseline projections are calculated for the residents in the attendance area, the Intra-District and Inter-District factors are applied to determine the projected enrollment for each school.

The last three columns in the chart "Current Enrollment", "16/17 Projection" and "Net Change" show the current enrollment, next year's projection and net change in enrollment for next year. These are compared by grade to show the details needed for staffing and classroom needs.

El Dorado Union High School District

Demographic Study

January 2016



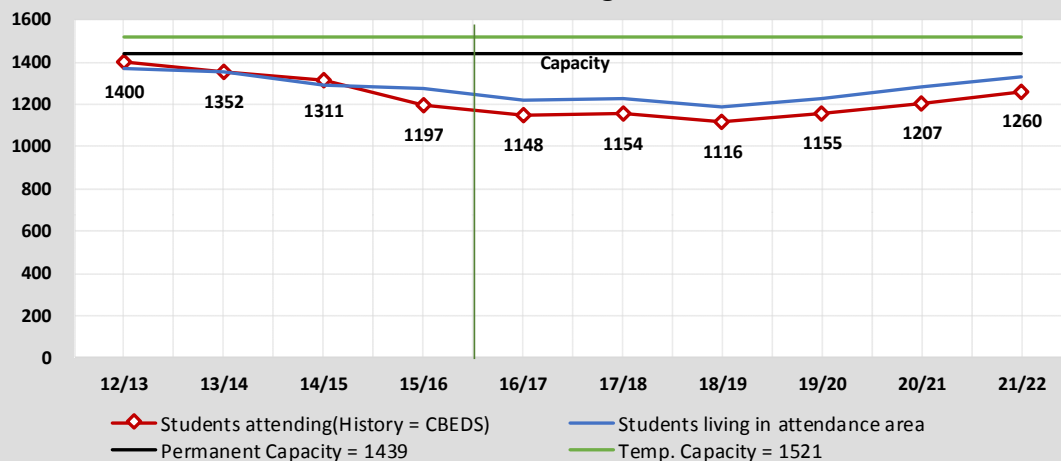
El Dorado Union High School District

Demographic Study

January 2016

Capacity & Projected Enrollment

El Dorado High



District Loading Standards

Traditional School

3 Temporary Portables

Classroom Count = 54

Grades Served = 9 - 12

Classroom Needs Timeline

Year	Total Students*	Annual Change	Spec. Ed. Students	Facility Capacity	Temporary Capacity	Unhoused Students	Annual CR Needed	Total CR's Needed	Available Seats	Projected Housing
										Units
15/16	1197	-114	21	1439	1521	0	0	-9	242	
16/17	1148	-49	20	1439	1521	0	0	-10	291	2
17/18	1154	6	20	1439	1521	0	0	-11	285	2
18/19	1116	-38	20	1439	1521	0	0	-12	323	2
19/20	1155	39	20	1439	1521	0	0	-11	284	2
20/21	1207	52	21	1439	1521	0	0	-9	232	2
21/22	1260	53	22	1439	1521	0	0	-7	179	2

* Based on Students Attending (Squares on Graph)

Classroom Count = 54

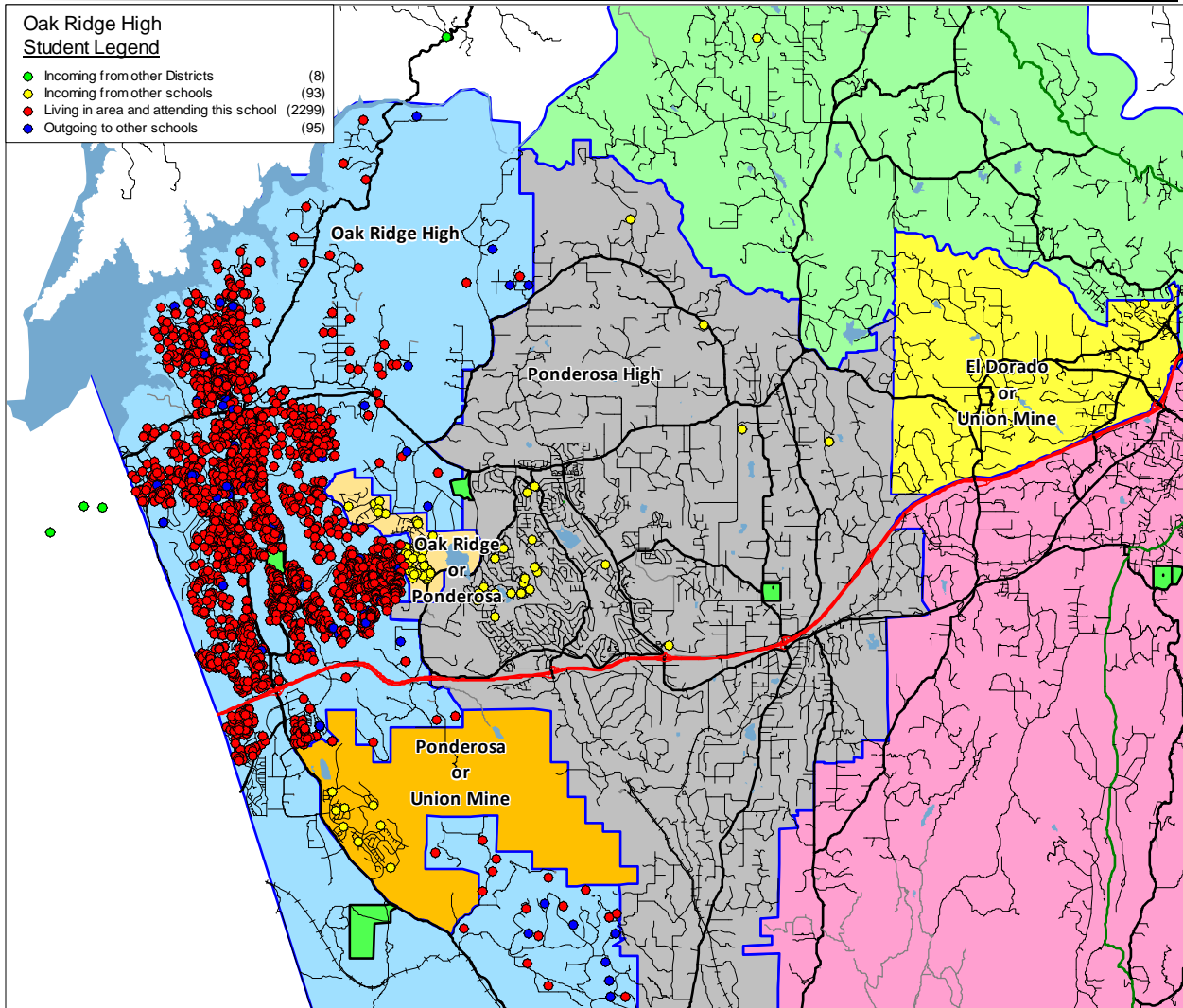
El Dorado High

YEAR:	Students in boundary				Historic Cohorts			Weighted Average	Attendance Factors		Current Enrollment	16/17 Projection	Net Change
	12/13	13/14	14/15	15/16	12 to 13	13 to 14	14 to 15		Intra	Inter			
Grade													
K	423	386	393	382	-37	7	-11	-4	0.0%	0.0%	0	0	0
1	368	363	315	317	-60	-71	-76	-36	0.0%	0.0%	0	0	0
2	337	353	355	323	-15	-8	8	-1	0.0%	0.0%	0	0	0
3	306	335	366	366	-2	13	11	10	0.0%	0.0%	0	0	0
4	321	302	318	357	-4	-17	-9	-11	0.0%	0.0%	0	0	0
5	326	306	303	338	-15	1	20	8	0.0%	0.0%	0	0	0
6	310	319	311	313	-7	5	10	6	0.0%	0.0%	0	0	0
7	312	298	304	300	-12	-15	-11	-13	0.0%	0.0%	0	0	0
8	283	320	296	303	8	-2	-1	0	0.0%	0.0%	0	0	0
9	358	319	329	298	36	9	2	10	-12.1%	1.7%	267	281	14
10	343	351	294	339	-7	-25	10	-5	-1.8%	0.9%	336	289	-47
11	339	324	356	292	-19	5	-2	-3	-11.3%	2.1%	265	308	43
12	332	360	315	342	21	-9	-14	-7	-11.4%	1.5%	308	250	-58
SDC											21	20	-1
Totals	4358	4336	4255	4270	-8.7	-8.2	-4.8	-3.5	-9.1%	1.5%	1197	1148	-49

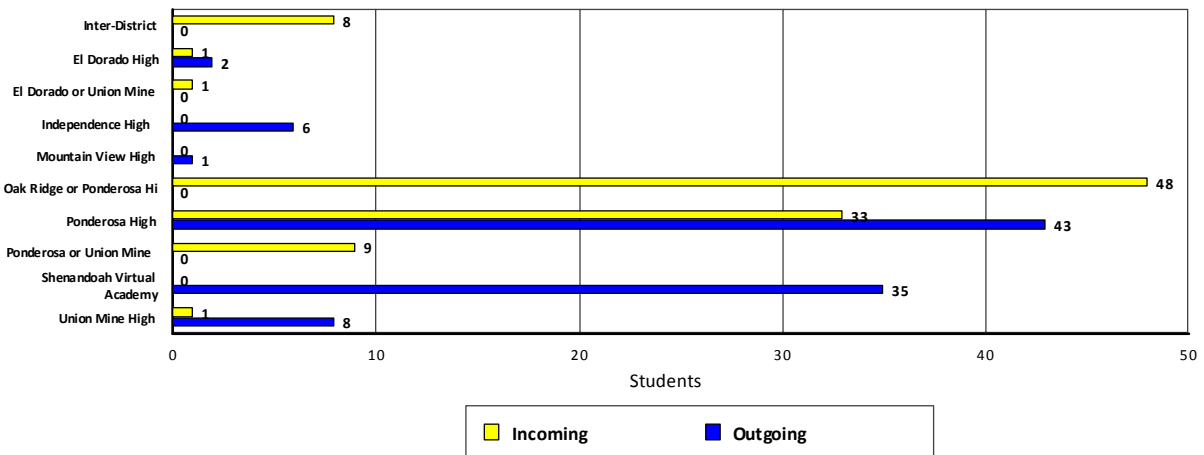
El Dorado Union High School District Demographic Study January 2016

Oak Ridge High Student Legend

- Incoming from other Districts (8)
- Incoming from other schools (93)
- Living in area and attending this school (2299)
- Outgoing to other schools (95)



Oak Ridge High Transfer Students



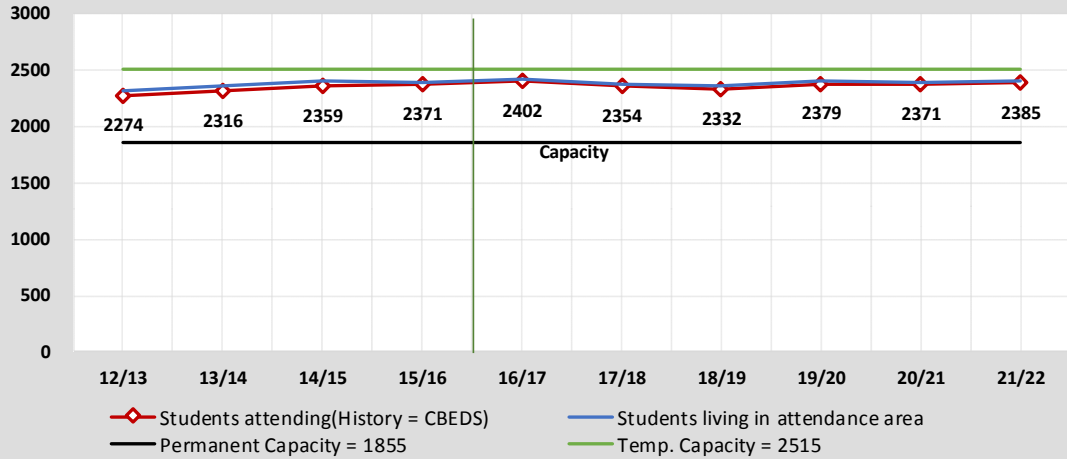
El Dorado Union High School District

Demographic Study

January 2016

Capacity & Projected Enrollment

Oak Ridge High



District Loading Standards

Traditional School

24 Temporary Portables

Classroom Count = 68

Grades Served = 9 - 12

Classroom Needs Timeline

Year	Total Students*	Annual Change	Spec. Ed. Students	Facility Capacity	Temporary Capacity	Unhoused Students	Annual CR Needed	Total CR's Needed	Available Seats	Projected Housing
										Units
15/16	2371	12	20	1855	2515	517	19	19	0	
16/17	2402	31	20	1855	2515	548	1	20	0	98
17/18	2354	-48	20	1855	2515	500	0	19	0	155
18/19	2332	-22	20	1855	2515	478	0	18	0	252
19/20	2379	47	21	1855	2515	525	0	20	0	437
20/21	2371	-8	21	1855	2515	517	0	19	0	434
21/22	2385	14	21	1855	2515	531	0	20	0	463

* Based on Students Attending (Squares on Graph)

Classroom Count = 68

Oak Ridge High

YEAR:	Students in boundary				Historic Cohorts			Weighted Average	Attendance Factors		Current Enrollment	16/17 Projection	Net Change
	12/13	13/14	14/15	15/16	12 to 13	13 to 14	14 to 15		Intra	Inter			
Grade													
K	481	487	466	463	6	-21	-3	-5	0.0%	0.0%	0	0	0
1	463	443	408	368	-38	-79	-98	-41	0.0%	0.0%	0	0	0
2	484	472	486	443	9	43	35	33	0.0%	0.0%	0	0	0
3	504	513	499	508	29	27	22	25	0.0%	0.0%	0	0	0
4	541	523	531	523	19	18	24	21	0.0%	0.0%	0	0	0
5	582	574	531	561	33	8	30	23	0.0%	0.0%	0	0	0
6	569	600	582	543	18	8	12	12	0.0%	0.0%	0	0	0
7	565	582	603	590	13	3	8	7	0.0%	0.0%	0	0	0
8	583	578	593	616	13	11	13	12	0.0%	0.0%	0	0	0
9	581	642	615	603	59	37	10	27	0.2%	0.0%	604	636	32
10	603	580	644	602	-1	2	-13	-6	-0.7%	0.3%	600	587	-13
11	562	584	563	637	-19	-17	-7	-12	-4.1%	0.0%	611	556	-55
12	567	556	577	552	-6	-7	-11	-9	-4.0%	1.1%	536	603	67
SDC											20	20	0
Totals	7085	7134	7098	7009	10.4	2.5	1.7	6.7	-2.1%	0.4%	2371	2402	31

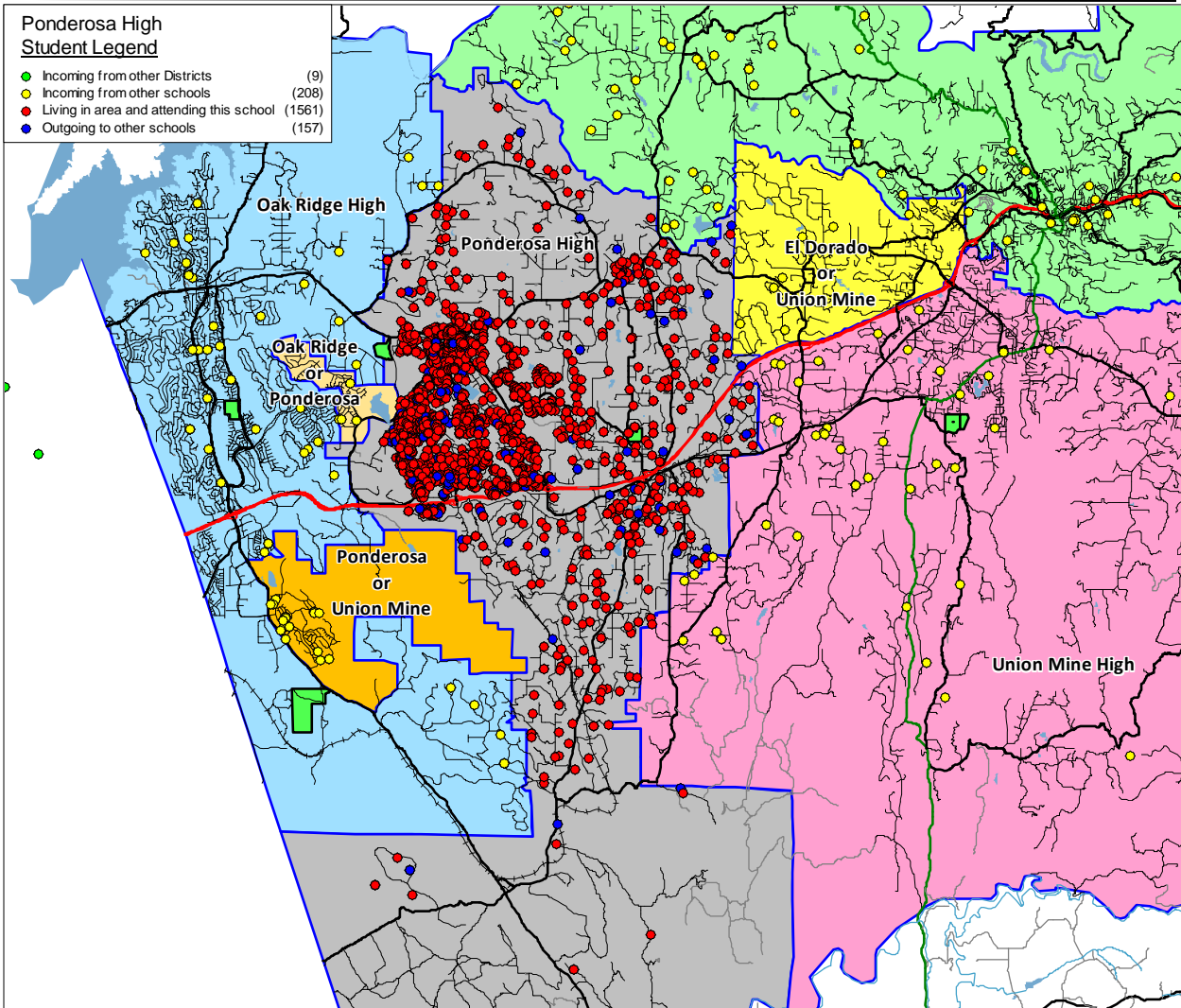
El Dorado Union High School District

Demographic Study

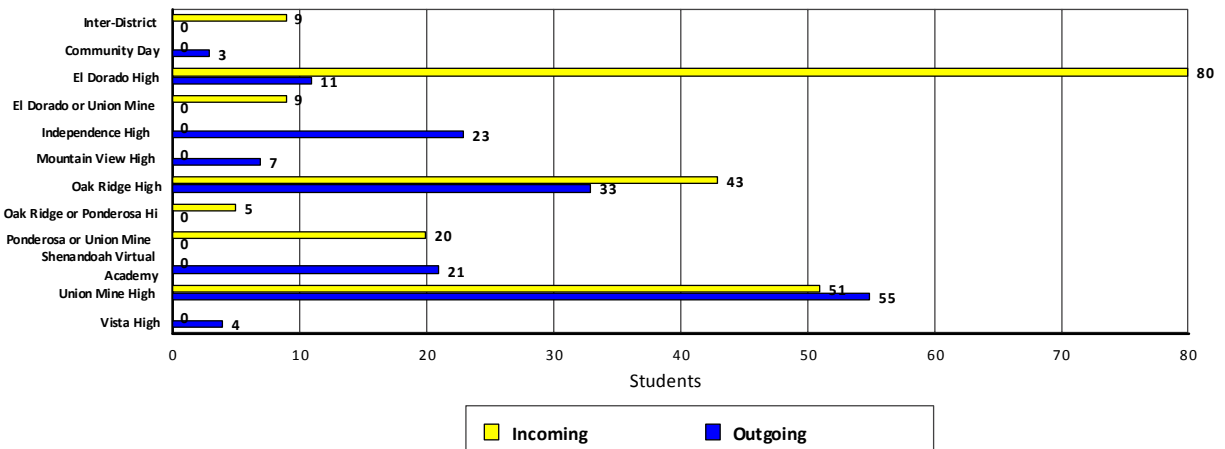
January 2016

Ponderosa High Student Legend

- Incoming from other Districts (9)
- Incoming from other schools (208)
- Living in area and attending this school (1561)
- Outgoing to other schools (157)



Ponderosa High Transfer Students



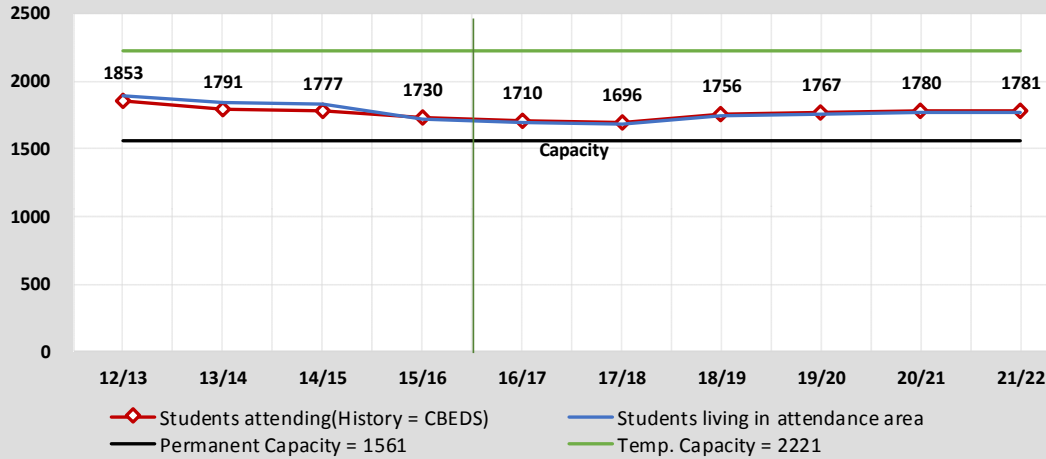
El Dorado Union High School District

Demographic Study

January 2016

Capacity & Projected Enrollment

Ponderosa High



District Loading Standards

Traditional School

24 Temporary Portables

Classroom Count = 59

Grades Served = 9 - 12

Classroom Needs Timeline

Year	Total Students*	Annual Change	Spec. Ed. Students	Facility Capacity	Temporary Capacity	Unhoused Students	Annual CR Needed	Total CR's Needed	Available Seats	Projected Housing
										Units
15/16	1730	-47	55	1561	2221	170	7	7	0	
16/17	1710	-20	55	1561	2221	150	0	5	0	85
17/18	1696	-14	55	1561	2221	136	0	6	0	85
18/19	1756	60	57	1561	2221	196	1	8	0	113
19/20	1767	11	57	1561	2221	207	0	8	0	155
20/21	1780	13	59	1561	2221	220	1	9	0	322
21/22	1781	1	59	1561	2221	221	0	9	0	342

* Based on Students Attending (Squares on Graph)

Classroom Count = 59

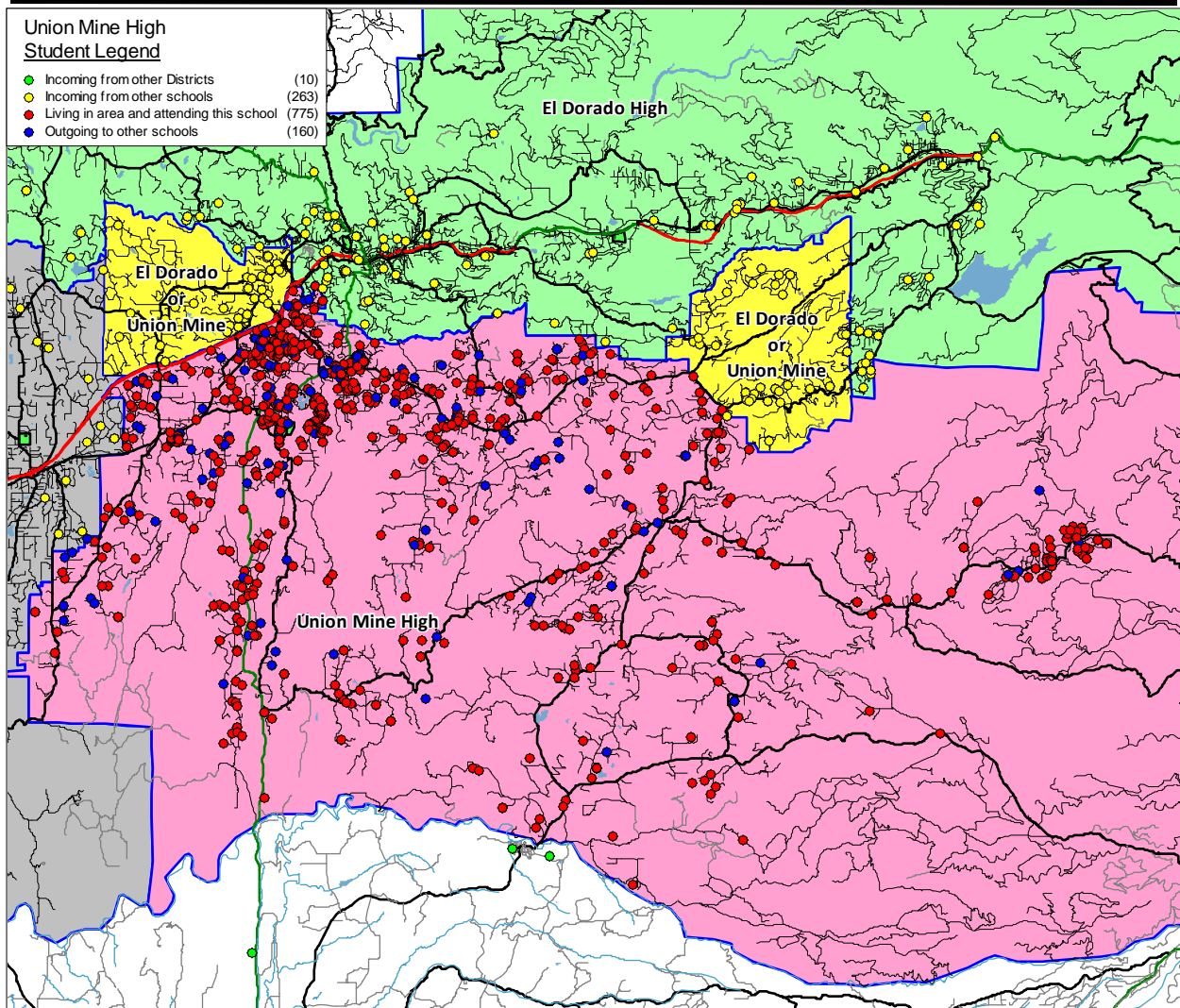
Ponderosa High

YEAR:	Students in boundary				Historic Cohorts			Weighted Average	Attendance Factors		Current Enrollment	16/17 Projection	Net Change
	12/13	13/14	14/15	15/16	12 to 13	13 to 14	14 to 15		Intra	Inter			
Grade													
K	355	351	381	324	-4	30	-57	-4	0.0%	0.0%	0	0	0
1	332	323	290	322	-32	-61	-59	-28	0.0%	0.0%	0	0	0
2	348	352	333	289	20	10	-1	6	0.0%	0.0%	0	0	0
3	418	360	342	346	12	-10	13	5	0.0%	0.0%	0	0	0
4	384	432	356	348	14	-4	6	4	0.0%	0.0%	0	0	0
5	387	399	428	346	15	-4	-10	-4	0.0%	0.0%	0	0	0
6	372	389	401	433	2	2	5	4	0.0%	0.0%	0	0	0
7	385	379	394	409	7	5	8	7	0.0%	0.0%	0	0	0
8	399	405	378	399	20	-1	5	6	0.0%	0.0%	0	0	0
9	477	469	448	413	70	43	35	44	10.2%	0.0%	455	486	31
10	470	456	465	425	-21	-4	-23	-16	0.2%	0.2%	427	400	-27
11	466	460	448	448	-10	-8	-17	-13	-7.8%	0.9%	417	382	-35
12	478	463	467	432	-3	7	-16	-6	-13.9%	0.9%	376	387	11
SDC											55	55	0
Totals	5271	5238	5131	4934	6.9	0.4	-8.5	0.4	-2.8%	0.5%	1730	1710	-20

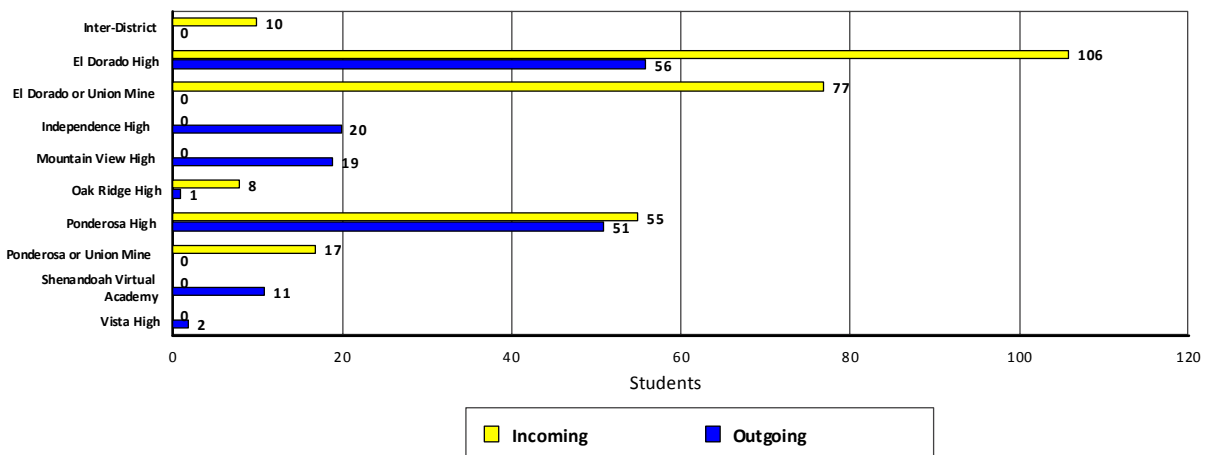
El Dorado Union High School District

Demographic Study

January 2016

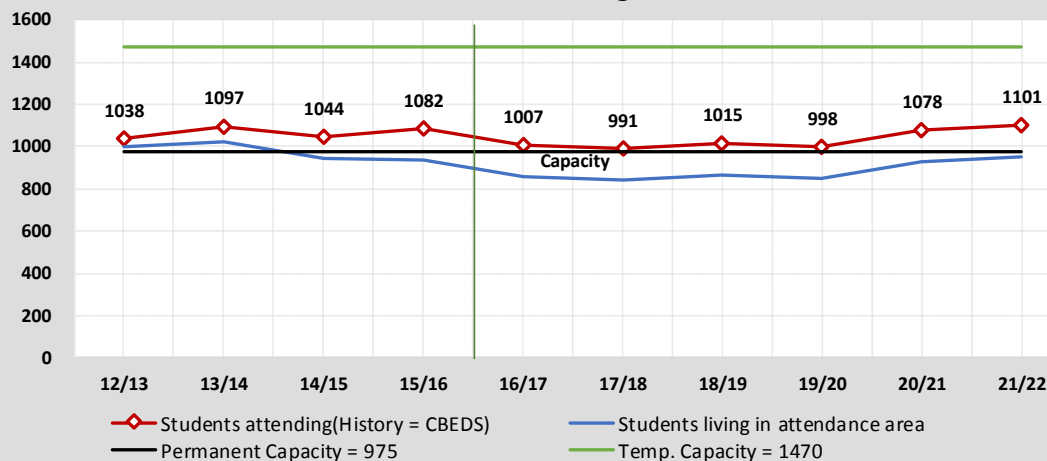


Union Mine High
Transfer Students



Capacity & Projected Enrollment

Union Mine High



District Loading Standards

Traditional School

18 Temporary Portables

Classroom Count = 36

Grades Served = 9 - 12

Classroom Needs Timeline

Year	Total Students*	Annual Change	Spec. Ed. Students	Facility Capacity	Temporary Capacity	Unhoused Students	Annual CR Needed	Total CR's Needed	Available Seats	Projected Housing
										Units
15/16	1082	38	17	975	1470	108	4	4	0	
16/17	1007	-75	16	975	1470	33	0	1	0	90
17/18	991	-16	16	975	1470	17	0	0	0	90
18/19	1015	24	16	975	1470	41	0	1	0	95
19/20	998	-17	16	975	1470	24	0	1	0	95
20/21	1078	80	18	975	1470	104	1	5	0	187
21/22	1101	23	18	975	1470	127	0	5	0	225

* Based on Students Attending (Squares on Graph)

Classroom Count = 36

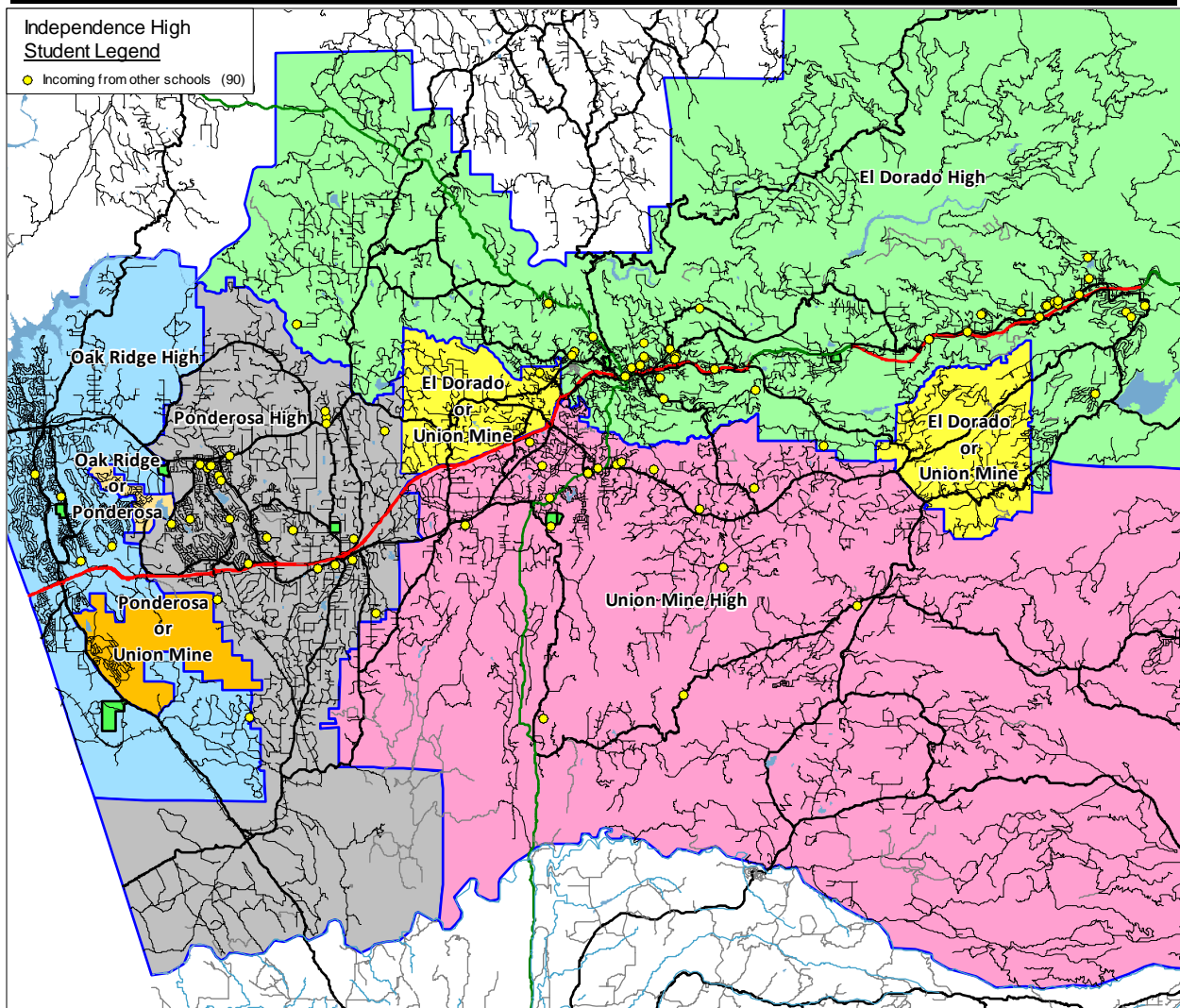
Union Mine High

YEAR:	Students in boundary				Historic Cohorts			Weighted Average	Attendance Factors		Current Enrollment	16/17 Projection	Net Change
	12/13	13/14	14/15	15/16	12 to 13	13 to 14	14 to 15		Intra	Inter			
Grade													
K	178	190	182	184	12	-8	2	-2	0.0%	0.0%	0	0	0
1	196	170	180	172	-8	-10	-10	-5	0.0%	0.0%	0	0	0
2	180	201	184	184	5	14	4	8	0.0%	0.0%	0	0	0
3	186	190	215	169	10	14	-15	-1	0.0%	0.0%	0	0	0
4	157	177	195	213	-9	5	-2	-1	0.0%	0.0%	0	0	0
5	176	183	190	187	26	13	-8	5	0.0%	0.0%	0	0	0
6	190	175	180	197	-1	-3	7	2	0.0%	0.0%	0	0	0
7	186	197	178	181	7	3	1	3	0.0%	0.0%	0	0	0
8	215	184	200	161	-2	3	-17	-8	0.0%	0.0%	0	0	0
9	256	235	195	232	20	11	32	23	12.5%	1.3%	264	217	-47
10	224	270	230	205	14	-5	10	6	16.1%	2.0%	242	276	34
11	278	235	283	229	11	13	-1	6	20.1%	0.9%	277	260	-17
12	241	283	236	269	5	1	-14	-6	4.5%	0.4%	282	238	-44
SDC											17	16	-1
Totals	2663	2690	2648	2583	6.9	3.9	-0.8	2.3	13.3%	1.1%	1082	1007	-75

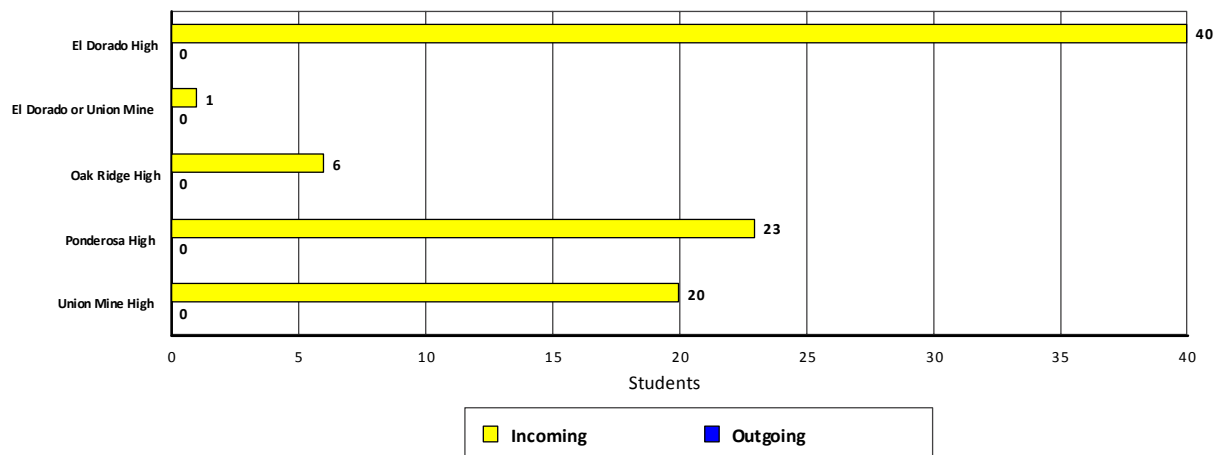
El Dorado Union High School District

Demographic Study

January 2016



Independence High
Transfer Students



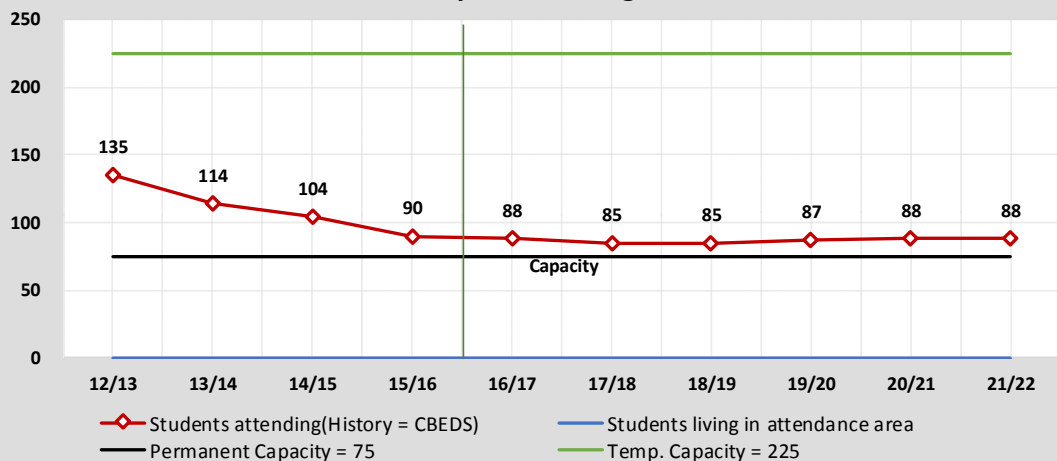
El Dorado Union High School District

Demographic Study

January 2016

Capacity & Projected Enrollment

Independence High



District Loading Standards

Traditional School
6 Temporary Portables
Classroom Count = 3
Grades Served = 9 - 12

Classroom Needs Timeline

	Total	Annual	Spec. Ed.	Facility	Temporary	Unhoused	Annual CR	Total CR's	Available	Projected
Year	Students*	Change	Students	Capacity	Capacity	Students	Needed	Needed	Seats	Housing Units
15/16	90	-14	0	75	225	15	1	1	0	
16/17	88	-2	0	75	225	13	0	1	0	275
17/18	85	-3	0	75	225	10	0	0	0	332
18/19	85	0	0	75	225	10	0	0	0	462
19/20	87	2	0	75	225	12	0	0	0	689
20/21	88	1	0	75	225	13	0	1	0	945
21/22	88	0	0	75	225	13	0	1	0	1032

* Based on Students Attending (Squares on Graph)

Classroom Count = 3

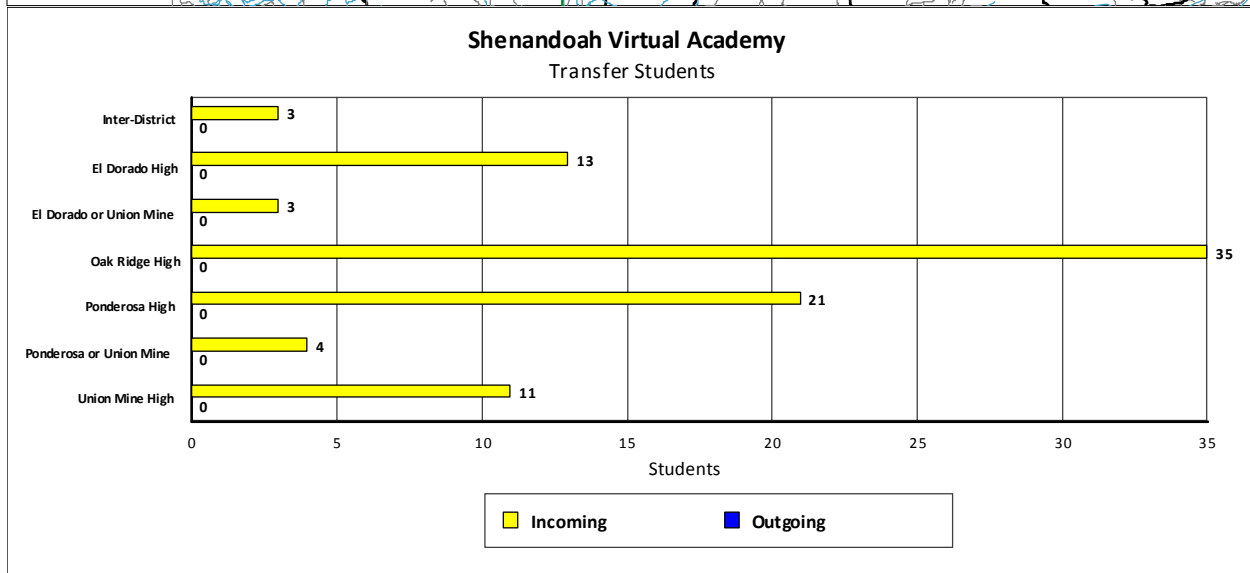
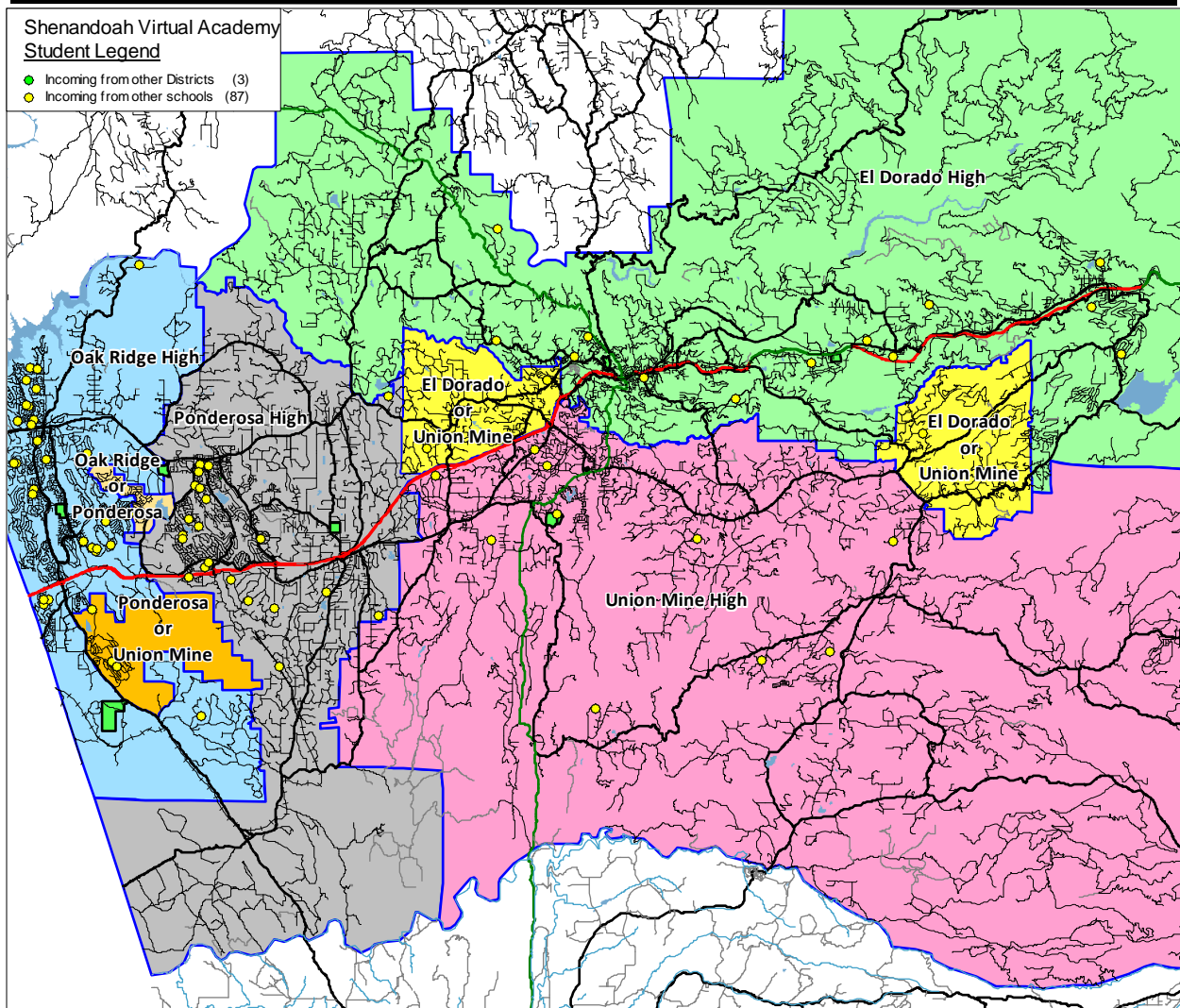
Independence High

YEAR:	Students in boundary				Historic Cohorts			Weighted Average	Attendance Factors		Current Enrollment	16/17 Projection	Net Change
	12/13	13/14	14/15	15/16	12 to 13	13 to 14	14 to 15		Intra	Inter			
Grade													
K	1437	1414	1422	1353	-23	8	-69	-15	0.0%	0.0%	0	0	0
1	1359	1299	1193	1179	-138	-221	-243	-109	0.0%	0.0%	0	0	0
2	1349	1378	1358	1239	19	59	46	46	0.0%	0.0%	0	0	0
3	1414	1398	1422	1389	49	44	31	38	0.0%	0.0%	0	0	0
4	1403	1434	1400	1441	20	2	19	14	0.0%	0.0%	0	0	0
5	1471	1462	1452	1432	59	18	32	32	0.0%	0.0%	0	0	0
6	1441	1483	1474	1486	12	12	34	23	0.0%	0.0%	0	0	0
7	1448	1456	1479	1480	15	-4	6	4	0.0%	0.0%	0	0	0
8	1480	1487	1467	1479	39	11	0	10	0.0%	0.0%	0	0	0
9	1672	1665	1587	1546	185	100	79	104	0.0%	0.0%	0	0	0
10	1640	1657	1633	1571	-15	-32	-16	-21	0.0%	0.3%	4	4	0
11	1645	1603	1650	1606	-37	-7	-27	-22	0.0%	1.9%	30	29	-1
12	1618	1662	1595	1595	17	-8	-55	-27	0.0%	3.5%	56	55	-1
Totals	19377	19398	19132	18796	15.5	-1.4	-12.5	5.9	0.0%	1.9%	90	88	-2

El Dorado Union High School District

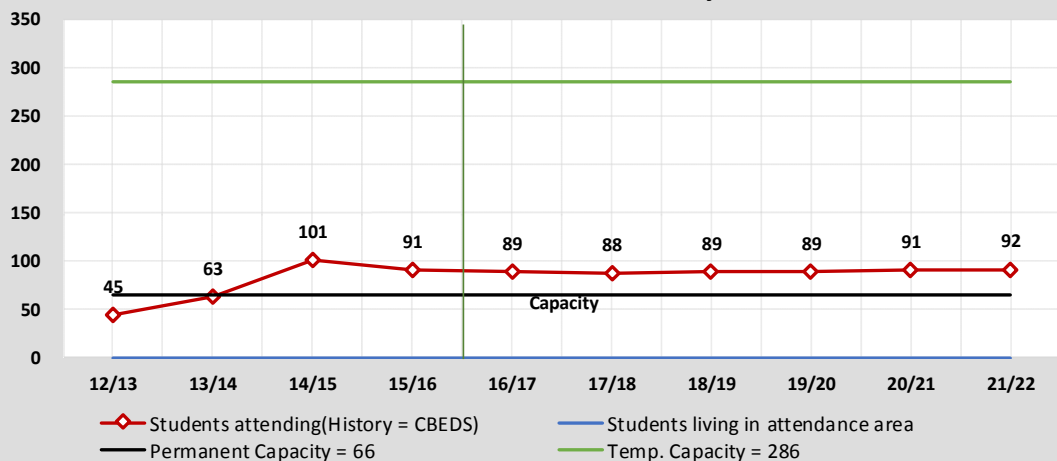
Demographic Study

January 2016



Capacity & Projected Enrollment

Shenandoah Virtual Academy



District Loading Standards

Traditional School

10 Temporary Portables

Classroom Count = 3

Grades Served = 9 - 12

Classroom Needs Timeline

Year	Total Students*	Annual Change	Spec. Ed. Students	Facility Capacity	Temporary Capacity	Unhoused Students	Annual CR Needed	Total CR's Needed	Available Seats	Projected Housing
										Units
15/16	91	-10	0	66	286	25	1	1	0	
16/17	89	-2	0	66	286	23	0	1	0	275
17/18	88	-1	0	66	286	22	0	1	0	332
18/19	89	1	0	66	286	23	0	1	0	462
19/20	89	0	0	66	286	23	0	1	0	689
20/21	91	2	0	66	286	25	0	1	0	945
21/22	92	1	0	66	286	26	0	1	0	1032

* Based on Students Attending (Squares on Graph)

Classroom Count = 3

Shenandoah Virtual Academy

YEAR:	Students in boundary				Historic Cohorts			Weighted Average	Attendance Factors		Current Enrollment	16/17 Projection	Net Change
	12/13	13/14	14/15	15/16	12 to 13	13 to 14	14 to 15		Intra	Inter			
Grade													
K	1437	1414	1422	1353	-23	8	-69	-15	0.0%	0.0%	0	0	0
1	1359	1299	1193	1179	-138	-221	-243	-109	0.0%	0.0%	0	0	0
2	1349	1378	1358	1239	19	59	46	46	0.0%	0.0%	0	0	0
3	1414	1398	1422	1389	49	44	31	38	0.0%	0.0%	0	0	0
4	1403	1434	1400	1441	20	2	19	14	0.0%	0.0%	0	0	0
5	1471	1462	1452	1432	59	18	32	32	0.0%	0.0%	0	0	0
6	1441	1483	1474	1486	12	12	34	23	0.0%	0.0%	0	0	0
7	1448	1456	1479	1480	15	-4	6	4	0.0%	0.0%	0	0	0
8	1480	1487	1467	1479	39	11	0	10	0.0%	0.0%	0	0	0
9	1672	1665	1587	1546	185	100	79	104	0.0%	1.0%	16	16	0
10	1640	1657	1633	1571	-15	-32	-16	-21	0.1%	1.1%	19	18	-1
11	1645	1603	1650	1606	-37	-7	-27	-22	0.0%	2.1%	33	32	-1
12	1618	1662	1595	1595	17	-8	-55	-27	0.0%	1.4%	23	23	0
Totals	19377	19398	19132	18796	15.5	-1.4	-12.5	5.9	0.0%	1.4%	91	89	-2

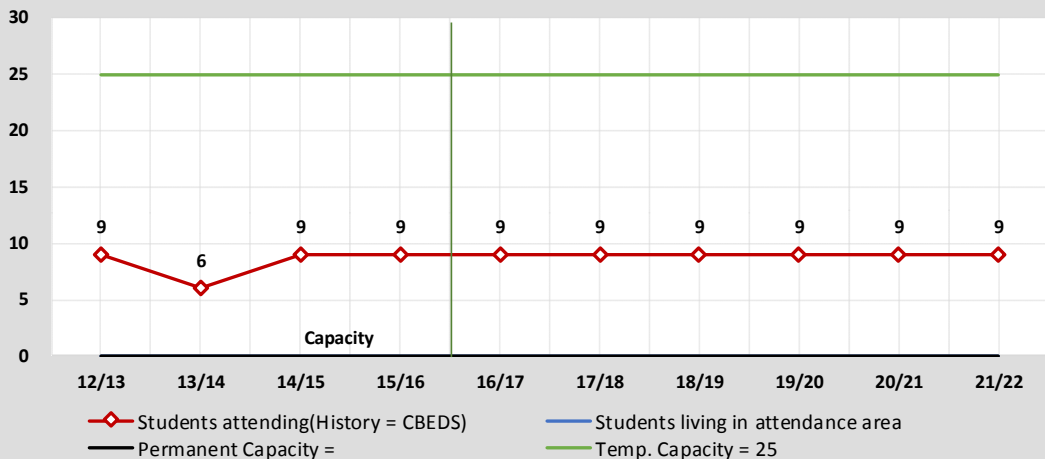
El Dorado Union High School District

Demographic Study

January 2016

Capacity & Projected Enrollment

Community Day



District Loading Standards

Traditional School

1 Temporary Portables

Classroom Count =

Grades Served = 9 - 12

Classroom Needs Timeline

Year	Total Students*	Annual Change	Spec. Ed. Students	Facility Capacity	Temporary Capacity	Unhoused Students	Annual CR Needed	Total CR's Needed	Available Seats	Projected Housing
										Units
15/16	9	0	0	0	25	9	0	0	0	
16/17	9	0	0	0	25	9	0	0	0	275
17/18	9	0	0	0	25	9	0	0	0	332
18/19	9	0	0	0	25	9	0	0	0	462
19/20	9	0	0	0	25	9	0	0	0	689
20/21	9	0	0	0	25	9	0	0	0	945
21/22	9	0	0	0	25	9	0	0	0	1032

* Based on Students Attending (Squares on Graph)

Classroom Count = 0

Community Day

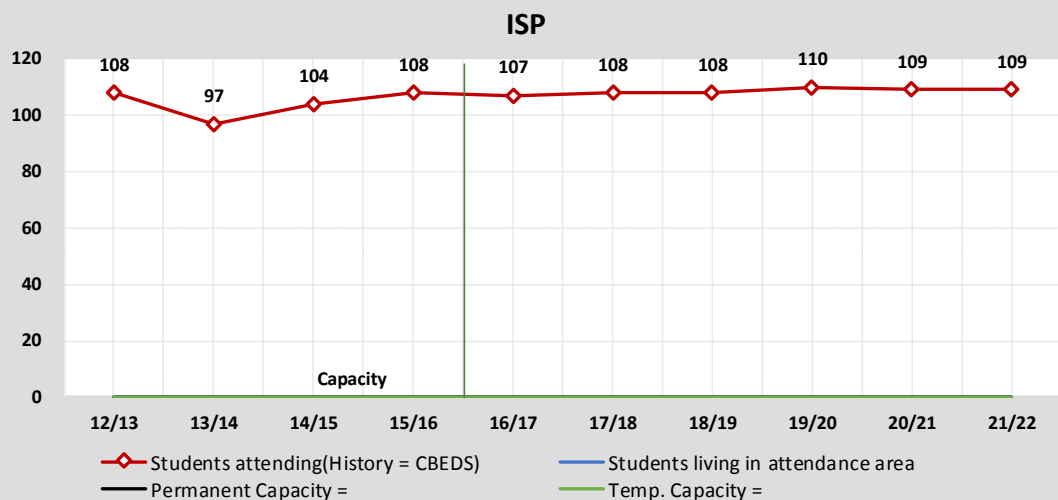
YEAR:	Students in boundary				Historic Cohorts			Weighted Average	Attendance Factors		Current Enrollment	16/17 Projection	Net Change
	12/13	13/14	14/15	15/16	12 to 13	13 to 14	14 to 15		Intra	Inter			
Grade													
K	1437	1414	1422	1353	-23	8	-69	-15	0.0%	0.0%	0	0	0
1	1359	1299	1193	1179	-138	-221	-243	-109	0.0%	0.0%	0	0	0
2	1349	1378	1358	1239	19	59	46	46	0.0%	0.0%	0	0	0
3	1414	1398	1422	1389	49	44	31	38	0.0%	0.0%	0	0	0
4	1403	1434	1400	1441	20	2	19	14	0.0%	0.0%	0	0	0
5	1471	1462	1452	1432	59	18	32	32	0.0%	0.0%	0	0	0
6	1441	1483	1474	1486	12	12	34	23	0.0%	0.0%	0	0	0
7	1448	1456	1479	1480	15	-4	6	4	0.0%	0.0%	0	0	0
8	1480	1487	1467	1479	39	11	0	10	0.0%	0.0%	0	0	0
9	1672	1665	1587	1546	185	100	79	104	0.0%	0.0%	0	0	0
10	1640	1657	1633	1571	-15	-32	-16	-21	0.0%	0.2%	3	3	0
11	1645	1603	1650	1606	-37	-7	-27	-22	0.0%	0.2%	3	3	0
12	1618	1662	1595	1595	17	-8	-55	-27	0.1%	0.1%	3	3	0
Totals	19377	19398	19132	18796	15.5	-1.4	-12.5	5.9	0.0%	0.2%	9	9	0

El Dorado Union High School District

Demographic Study

January 2016

Capacity & Projected Enrollment



District Loading Standards

Traditional School

Temporary Portables

Classroom Count =

Grades Served = 9 - 12

Classroom Needs Timeline

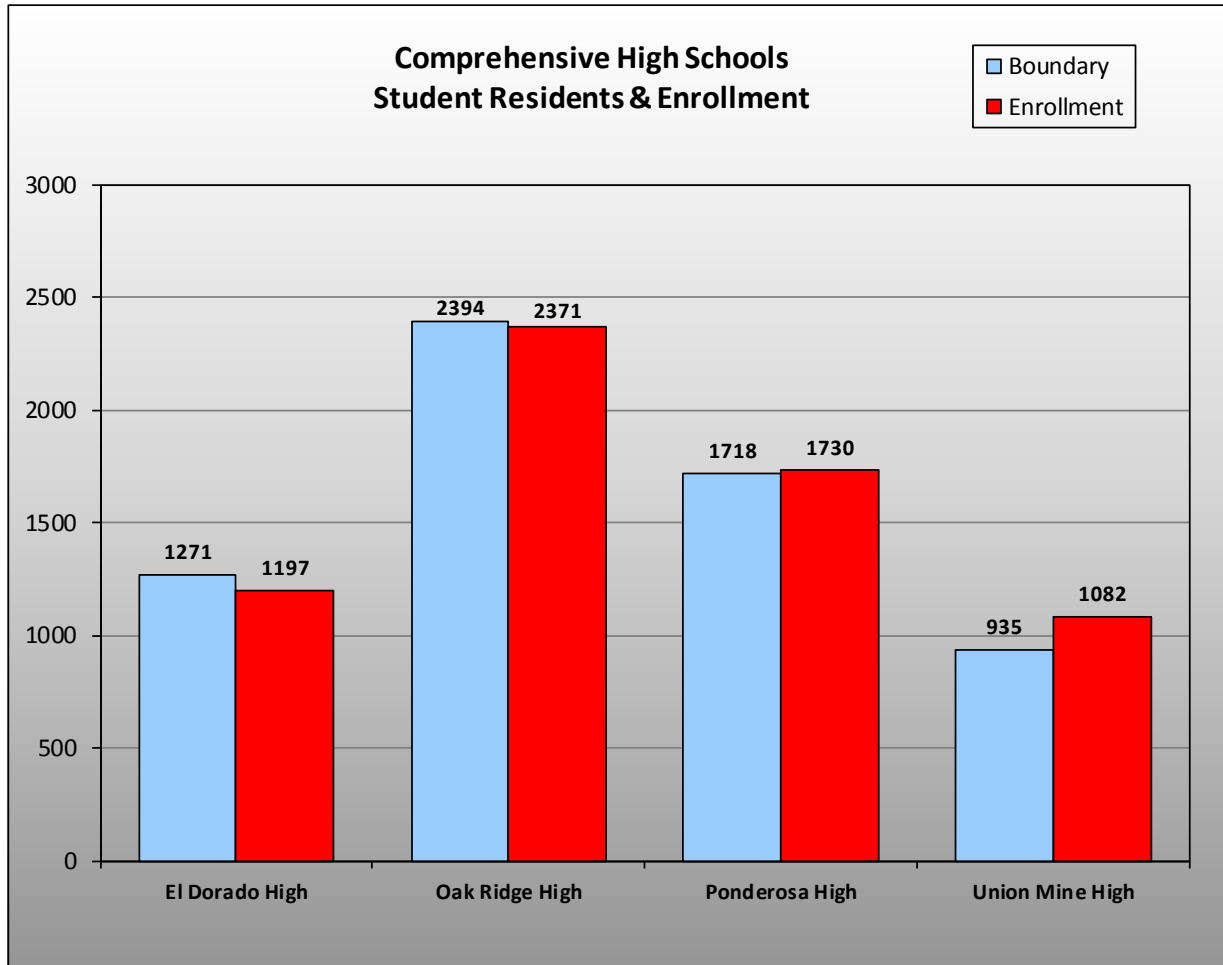
Year	Total Students*	Annual Change	Spec. Ed. Students	Facility Capacity	Temporary Capacity	Unhoused Students	Annual CR Needed	Total CR's Needed	Available Seats	Projected Housing
										Units
15/16	108	4	108	0	0	108	9	9	0	
16/17	107	-1	107	0	0	107	0	0	0	275
17/18	108	1	108	0	0	108	0	9	0	332
18/19	108	0	108	0	0	108	0	9	0	462
19/20	110	2	110	0	0	110	0	9	0	689
20/21	109	-1	109	0	0	109	0	9	0	945
21/22	109	0	109	0	0	109	0	9	0	1032

* Based on Students Attending (Squares on Graph)

Classroom Count = 0

YEAR:	Students in boundary				Historic Cohorts			Weighted Average	Attendance Factors		Current Enrollment	16/17 Projection	Net Change
	12/13	13/14	14/15	15/16	12 to 13	13 to 14	14 to 15		Intra	Inter			
Grade													
K	1437	1414	1422	1353	-23	8	-69	-15	0.0%	0.0%	0	0	0
1	1359	1299	1193	1179	-138	-221	-243	-109	0.0%	0.0%	0	0	0
2	1349	1378	1358	1239	19	59	46	46	0.0%	0.0%	0	0	0
3	1414	1398	1422	1389	49	44	31	38	0.0%	0.0%	0	0	0
4	1403	1434	1400	1441	20	2	19	14	0.0%	0.0%	0	0	0
5	1471	1462	1452	1432	59	18	32	32	0.0%	0.0%	0	0	0
6	1441	1483	1474	1486	12	12	34	23	0.0%	0.0%	0	0	0
7	1448	1456	1479	1480	15	-4	6	4	0.0%	0.0%	0	0	0
8	1480	1487	1467	1479	39	11	0	10	0.0%	0.0%	0	0	0
9	1672	1665	1587	1546	185	100	79	104	0.0%	0.0%	0	0	0
10	1640	1657	1633	1571	-15	-32	-16	-21	0.0%	0.0%	0	0	0
11	1645	1603	1650	1606	-37	-7	-27	-22	0.0%	0.0%	0	0	0
12	1618	1662	1595	1595	17	-8	-55	-27	0.0%	0.0%	0	0	0
SDC											108	107	-1
Totals	19377	19398	19132	18796	15.5	-1.4	-12.5	5.9			108	107	-1

Student Residency and Enrollment Comparison



This chart compares each individual comprehensive high school enrollment to the students that reside within the school attendance boundary. Utilizing this data helps make it easy to see which schools have the largest and smallest enrollments as well as which boundaries are most populated. Schools with more students enrolled than those living in the boundary have a net transfer into the school. This is typically found at schools with special programs such as Gate or Dual Immersion, schools housing students from overcrowded or PI schools, and schools with more capacity than the student population living in the boundary.

District Projections

This graph shows a summary of the projections for the entire District. It shows the current enrollment for 2015/16, the historic enrollment for the past nine years, and the projected enrollment for the next six years. The end result is a total of 6,825 students in the District in six years.



El Dorado Union High School District
Demographic Study
January 2016

One Year Enrollment Projection Summary

El Dorado Union High School Enrollment Projections YEAR 16/17, 1 Year Proj.						
<u>School</u>	<u>9</u>	<u>10</u>	<u>11</u>	<u>12</u>	<u>SDC</u>	<u>TOTAL</u>
El Dorado High	281	289	308	250	20	1,148
Oak Ridge High	636	587	556	603	20	2,402
Ponderosa High	486	400	382	387	55	1,710
Union Mine High	217	276	260	238	16	1,007
Independence High	0	4	29	55	0	88
Shenandoah Virtual Academy	16	18	32	23	0	89
Community Day	0	3	3	3	0	9
ISP	0	0	0	0	107	107
Totals	1,636	1,577	1,570	1,559	218	6,560
Current CBEDS	1,606	1,631	1,636	1,584	221	6,678
Net Change	30	-54	-66	-25	-3	-118
Cohort Change		-29	-61	-77		

The projection for next year (2016/17) shows a decrease of 118 students. The largest decline will be seen at 11th grade. The largest increase is at 9th grade.

These projections assume the transfers between schools remain consistent. If changes in facilities, schedules, programs or policies are made then the patterns may be impacted.

El Dorado Union High School District
Demographic Study
January 2016

Enrollment Projection Summary by Grade

El Dorado Union High School District Enrollment Projection Summary by Grade							
Grade	Current Enrollment						
	<u>15/16</u>	<u>16/17</u>	<u>17/18</u>	<u>18/19</u>	<u>19/20</u>	<u>20/21</u>	<u>21/22</u>
9	1,606	1,636	1,643	1,658	1,637	1,703	1,687
10	1,631	1,577	1,610	1,623	1,648	1,640	1,710
11	1,636	1,570	1,518	1,560	1,584	1,623	1,617
12	1,584	1,559	1,495	1,448	1,501	1,539	1,582
SDC	221	218	219	221	224	228	229
Total 9-12	6,457	6,342	6,266	6,289	6,370	6,505	6,596
Total SDC	221	218	219	221	224	228	229
District Totals	6,678	6,560	6,485	6,510	6,594	6,733	6,825

Enrollment Projection Summary by School

El Dorado Union High School District Enrollment Projection Summary by School							
School	Current Enrollment						
	<u>15/16</u>	<u>16/17</u>	<u>17/18</u>	<u>18/19</u>	<u>19/20</u>	<u>20/21</u>	<u>21/22</u>
El Dorado High	1,197	1,148	1,154	1,116	1,155	1,207	1,260
Oak Ridge High	2,371	2,402	2,354	2,332	2,379	2,371	2,385
Ponderosa High	1,730	1,710	1,696	1,756	1,767	1,780	1,781
Union Mine High	1,082	1,007	991	1,015	998	1,078	1,101
High Totals	6,380	6,267	6,195	6,219	6,299	6,436	6,527
Independence High	90	88	85	85	87	88	88
Shenandoah Virtual Academy	91	89	88	89	89	91	92
Community Day	9	9	9	9	9	9	9
ISP	108	107	108	108	110	109	109
Other Totals	298	293	290	291	295	297	298
District Totals	6,678	6,560	6,485	6,510	6,594	6,733	6,825
Annual Change		-118	-75	25	84	139	92

El Dorado Union High School District

Demographic Study

January 2016

School Facility Utilization

The following chart shows the current and projected utilization rates for each school. It has been color coded with blue representing schools with a utilization rate of under 70%, yellow representing a utilization rate of at least 70% but under 80% and red for the schools that have over 100% utilization.

School Facility Utilization				2015/16	2021/22	2015/16	2021/22
	Permanent	District	Temporary	Current	Projected	Current	Projected
<u>High Schools</u>	<u>Classrooms</u>	<u>Capacity</u>	<u>Capacity</u>	<u>Enrollment</u>	<u>Enrollment</u>	<u>Utilization</u>	<u>Utilization</u>
El Dorado High	54	1,439	1,521	1,197	1,260	83.2%	87.6%
Oak Ridge High	68	1,855	2,515	2,371	2,385	127.8%	128.6%
Ponderosa High	59	1,561	2,221	1,730	1,781	110.8%	114.1%
Union Mine High	36	975	1,470	1,082	1,101	111.0%	112.9%
Sub-Totals	217	5,830	7,727	6,380	6,527	109.4%	112.0%
<u>Other Schools</u>							
Independence High	3	75	225	90	88		
Shenandoah Virtual Academy	3	66	286	91	92		
Community Day	0	0	25	9	9		
ISP	0	0	0	108	109		
Sub-Totals	6	141	536	298	298		
District Totals	223	5,971	8,263	6,678	6,825	111.8%	114.3%

For 2015, the most under-utilized school is El Dorado High and the highest utilization is at Oak Ridge High.